

Francesco M. Raimondo & Anna Geraci

A new taxonomic arrangement in Sicilian *Brassica* sect. *Brassica* (*Cruciferae*)

Abstract

Raimondo, F. M. & Geraci, A.: A new taxonomic arrangement in Sicilian *Brassica* sect. *Brassica* (*Cruciferae*). — Fl. Medit. 12: 439-441. 2002. — ISSN 1120-4052.

On the basis of recent studies using RAPD markers it has been verified that *Brassica rupestris* subsp. *brevisiliqua* Raimondo & Mazzola belongs to *B. villosa*. The new combination *B. villosa* subsp. *brevisiliqua* is therefore here proposed.

Brassica sect. *Brassica* ($2n = 18$) has variously been treated from the taxonomical point of view by different authors (Onno 1933, Snogerup & al. 1990, Raimondo & al. 1991, Raimondo & Mazzola 1997, Gladis & Hammer 2001).

In the case of the taxonomical relationships between *Brassica rupestris* Raf. and *B. villosa* Biv., both endemic to Sicily, according to the arrangement proposed by Raimondo & Mazzola (1997), *B. villosa* includes *B. villosa* subsp. *villosa*, *B. villosa* subsp. *bivoniana* (Mazzola & Raimondo) Raimondo & Mazzola, *B. villosa* subsp. *drepanensis* (Caruel) Raimondo & Mazzola, *B. villosa* subsp. *tinei* (Lojac.) Raimondo & Mazzola, while as to *B. rupestris*, it includes *B. rupestris* subsp. *rupestris*, *B. rupestris* subsp. *hispida* Raimondo & Mazzola and *B. rupestris* subsp. *brevisiliqua* Raimondo & Mazzola. Concerning this last subspecies, it shows intermediate characters between *B. rupestris* - glabrous adult leaves - and *B. villosa* - large siliqua and, in particular, some hairiness in the seedling - (Fig. 1). As consequence it had firstly been considered as belonging to *B. villosa* and quoted as *Brassica villosa* Biv. subsp. *glabrata* Raimondo & Mazzola (*nomen nudum* in Conti & al. 1997) but later Raimondo & Mazzola (1997) described the taxon in question as *B. rupestris* subsp. *brevisiliqua*.

Further molecular analysis carried out using RAPD markers (Geraci & al. 2001) shows that *B. rupestris* subsp. *brevisiliqua* has more genetic affinity to *B. villosa* (Fig. 2). This result agrees with the first hypothesis to refer this taxon to *B. villosa*.

Therefore its transfer to *B. villosa* is proposed in this contribution, with the subspecific rank and with the following new combination.

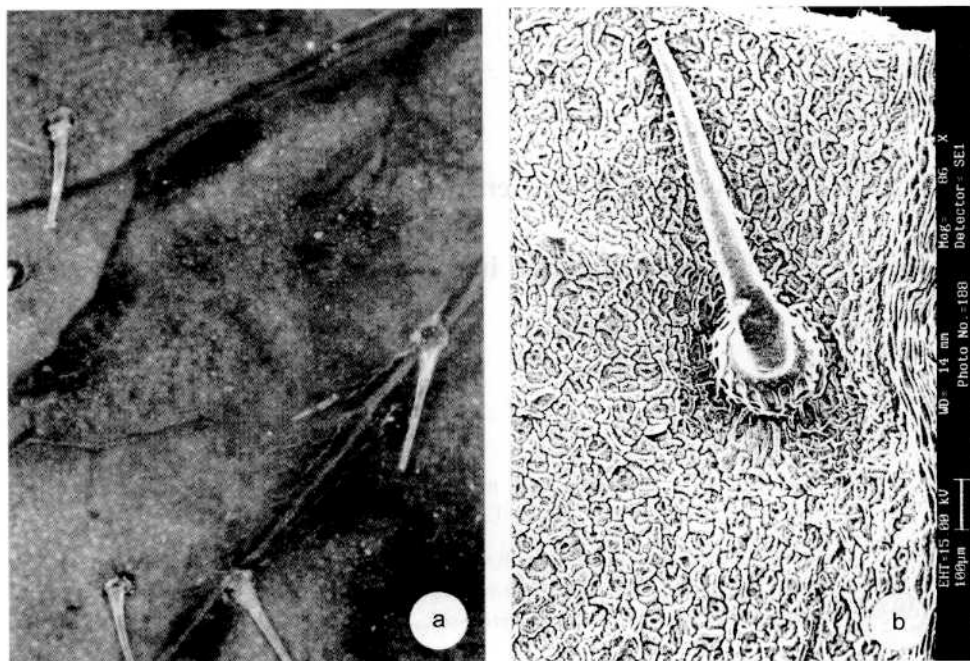


Fig. 1. Seedling leaf surface of *Brassica villosa* subsp. *brevisiliqua*. (a) 32x; (b) SEM vision.

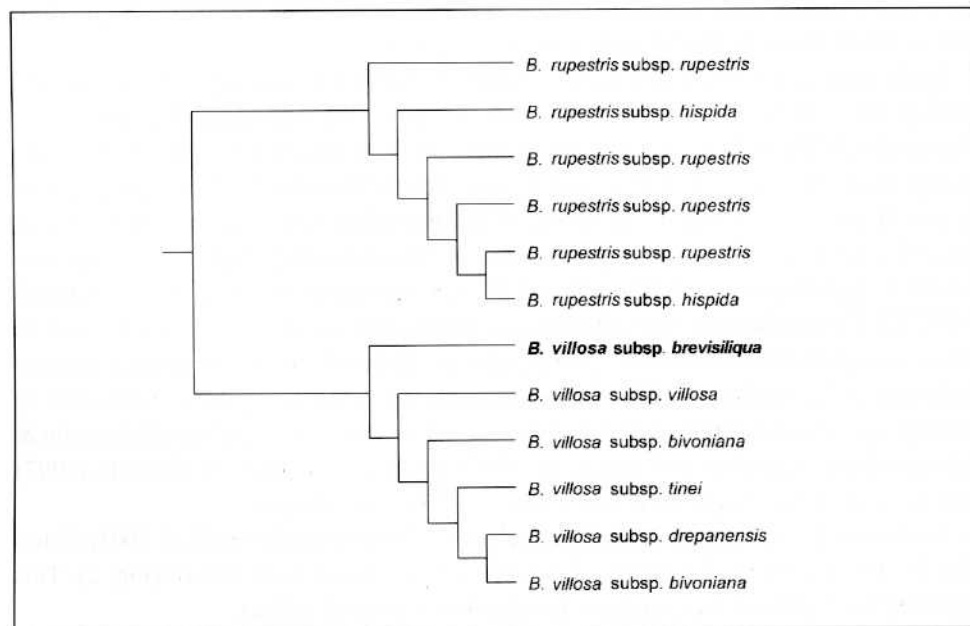


Fig. 2. Clusters of *Brassica villosa* and *B. rupestris* (from Geraci & al. 2001, modified) showing the position of *B. villosa* subsp. *brevisiliqua*.

Brassica villosa subsp. *brevisiliqua* (Raimondo & Mazzola) Raimondo & Geraci **comb. nov.**
≡ *B. rupestris* subsp. *brevisiliqua* Raimondo & Mazzola, Lagasalia 19(1-2): 834.

Typus. “*Holotypus*: S. Vito Lo Capo (TP). Località Isolidda, rupi presso il camping El Bahira; 25 m s.l.m.; 25.III.1995. F.M. Raimondo” (PAL).

References

- Conti, F., Manzi, A. & Pedrotti F. 1997: Liste rosse regionali delle piante di Italia. — WWF, SBI Camerino.
- Geraci, A., Divaret, I., Raimondo, F.M. & Chèvre, A.M. 2001: Genetic relationships between Sicilian wild populations of *Brassica* analysed with RAPD markers. — *Pl. Breed.* **120**: 193-196.
- Gladis, Th. & Hammer K. 2001: Nomenclatural notes on the *Brassica oleracea*-group. — *Genet. Res. Crop Evol.* **48**: 7-11.
- Onno, M. 1933: Die Wildformen aus dem Verwandtschaftskreis *Brassica oleracea* L. — *Österr. Bot. Z.* **82**: 309-334.
- Raimondo, F. M., Mazzola, P. & Ottonello, D. 1991: On the taxonomy and distribution of *Brassica* sect. *Brassica* (*Cruciferae*) in Sicily. — *Fl. Medit.* **1**: 63-86.
- & Mazzola, P. 1997: A new taxonomic arrangement of the Sicilian members of *Brassica* sect. *Brassica*. — *Lagasalia* **19(1-2)**: 831-838.
- Snogerup, S., Gustafsson, M. & Bothmer, R. von 1990: *Brassica* sect. *Brassica* (*Brassicaceae*). I. Taxonomy and variation. — *Willdenowia* **19**: 271-365.

Address of the authors:

Prof. Francesco M. Raimondo, Dott. Anna Geraci, Dipartimento di Scienze Botaniche dell'Università di Palermo, via Archirafi 28 – I-90123 Palermo.